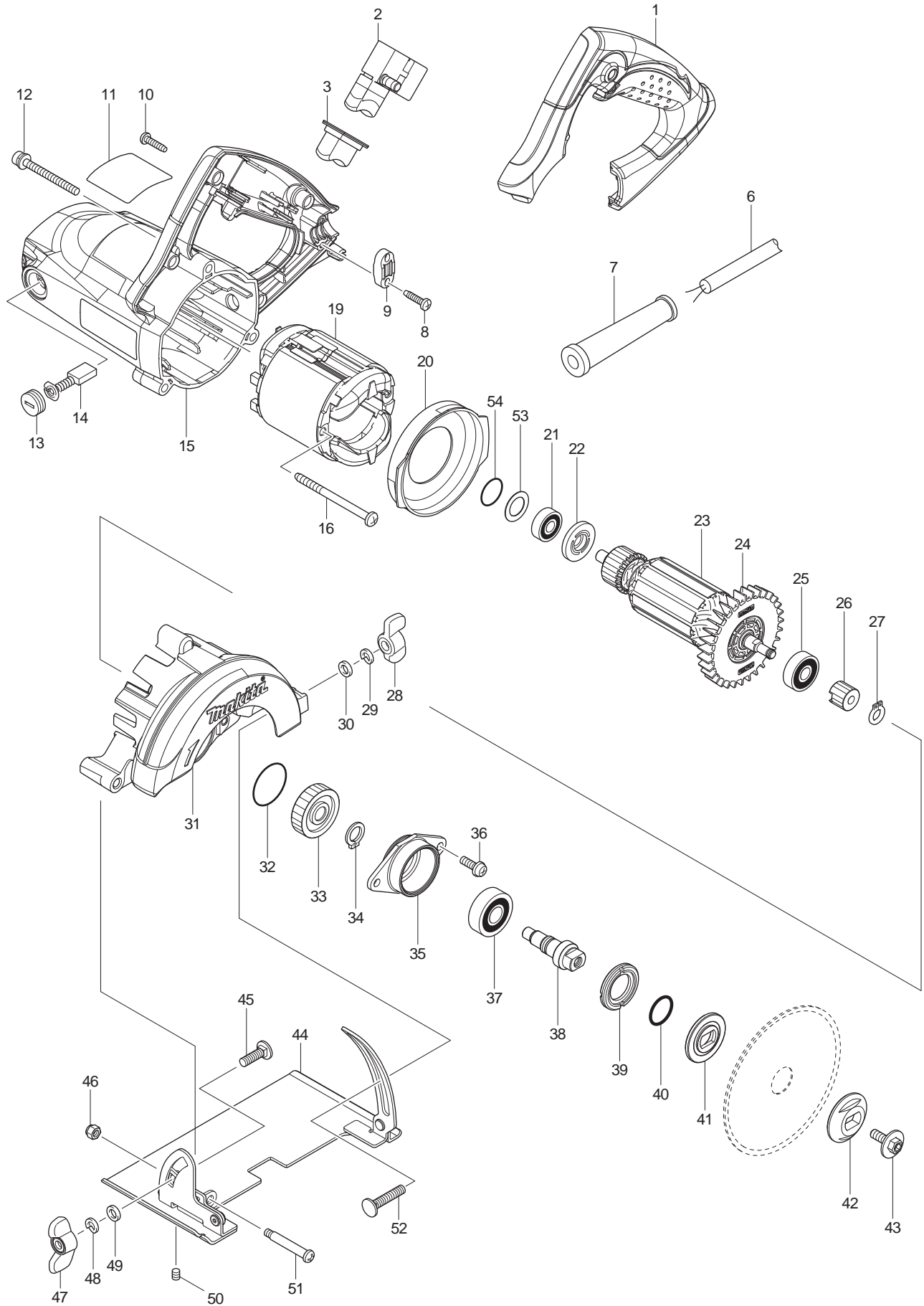




04 - 2012
4100NH2ZX1
4" MASONRY SAW



Item No.	Type	Sub	Part No.	Description	Qty	Unit
001			450838-7	HANDLE COVER	1	PC.
002	2		650248-0	SWITCH SGES115C-3	1	PC.
003	3		424585-6	DUST COVER	1	PC.
006			664265-4	CORD WITH PLUG 2P-16-2.5M SJ	1	PC.
007			682505-8	CORD GUARD 10-90	1	PC.
008	2		266326-2	TAPPING SCREW 4X18	2	PC.
009			687063-9	CORD CLAMP (STRAIN RELIEF)	1	PC.
010	2		266326-2	TAPPING SCREW 4X18	4	PC.
011			897639-6	NAME PLATE F/4100NH2	1	PC.
012	2		265104-7	PAN HEAD SCREW M5X40	3	PC.
013	2		644500-6	BRUSH HOLDER CAP 7-11	2	PC.
	3		643750-0	BRUSH HOLDER CAP 7-11	2	PC.
014			194996-6	CARBON BRUSH CB-303 2PC/SET	1	SET
015			141728-2	MOTOR HOUSING COMPLETE	1	PC.
		INC.	643708-9	BRUSH HOLDER 5-11	2	PC.
		INC.	892784-2	CAUTION LABEL, FR/SP	1	PC.
016	2		266389-8	TAPPING SCREW 5X70	2	PC.
019			594581-9	FIELD ASSY 115V	1	PC.
		INC.	654020-2	RING TERMINAL	2	PC.
		INC.	654501-6	CONNECTOR P-1.25	2	PC.
020			450839-5	BUFFLE PLATE	1	PC.
021			211395-8	BALL BEARING 608LLU	1	PC.
022			681644-1	INSULATION WASHER	1	PC.
023	1		510220-3	ARMATURE ASS'Y 115V	1	PC.
		INC.		Item No. 21,22,24,25		
	2		518192-6	ARMATURE ASS'Y 115V	1	PC.
		INC.		Item No. 21, 22, 24, 25	1	PC.
024			240109-8	FAN 70	1	PC.
025			211092-6	BALL BEARING 629DDW	1	PC.
026			226695-3	HELICAL GEAR 17	1	PC.
027			961002-0	RETAINING RING S-6	1	PC.
028			252649-4	THUMB NUT M6	1	PC.
029	2		253428-3	SPRING WASHER 6	1	PC.
030			941151-9	FLAT WASHER 6	1	PC.
031	2		142541-1	BLADE CASE COMPLETE	1	PC.
		INC.	212046-6	NEEDLE BEARING 810	1	PC.
		INC.	213445-5	O-RING 26	1	PC.
032			213444-7	O RING 30	1	PC.
033			226696-1	HELICAL GEAR 44	1	PC.
034			961052-5	RETAINING RING S-12	1	PC.
035	2		319044-2	* BEARING BOX	1	PC.
036			911223-4	PAN HEAD SCREW M5X16	2	PC.
037			211129-9	BALL BEARING 6201DDW	1	PC.
038			325603-2	SPINDLE	1	PC.
039	2		285858-0	* BEARING RETAINER 19-33	1	PC.
040			213279-6	O RING 18	1	PC.
041			224423-0	INNER FLANGE 36	1	PC.
042			224424-8	OUTER FLANGE 36	1	PC.
043			266510-9	HEX. SOCKET HEX. BOLT M6X18	1	PC.
044			165548-0	BASE	1	PC.
045			251919-8	CAP SQUARE NECK BOLT M6X20	1	PC.
046			252103-8	HEX. LOCK NUT M5-8	1	PC.
047			252649-4	THUMB NUT M6	1	PC.
048	2		253428-3	SPRING WASHER 6	1	PC.

Item No.	Type	Sub	Part No.	Description	Qty	Unit
049			941151-9	FLAT WASHER 6	1	PC.
050			266264-8	H.S.SET SCREW(FLAT POINT)M5X6	1	PC.
051			266515-9	+ PAN HEAD SCREW M5	1	PC.
052			251920-3	CAP SQUARE NECK BOLT M6X30	1	PC.
053			253192-6	FLAT WASHER 14	1	PC.
054			213262-3	O RING 18	1	PC.
100			455133-0	* SPONGE (Added)	1	PC.
C01			873698-4	CARTON F/4100NH2X1	1	PC.
D01			652008-6	PAN HEAD SCREW M3.5X7	2	PC.
D02			654037-5	INSULATED EYE TERMINAL FT1.25-M3	2	PC.
D03			654509-0	CONNECTOR 2-SD	1	PC.

ACCESSORIES

- See catalogue or visit www.makita.ca for more optional accessories -

A01	2		781041-2	WRENCH 22	1	PC.
A02	2		783217-7	HEX. WRENCH 5	1	PC.
A03	1		A-94546	4" TURBO RIM DIAMOND WHEEL, WET/DRY	1	PC.
	2		B-69680	4" TURBO RIM DIAMOND WHEEL	1	PC.
A04			D-36968	4-3/8" CURVED DIAMOND WHEEL 20MM, DRY	1	PC.
A05			198673-2	GUIDE RAIL ADAPTER SET	1	PC.

SERVICE CHANGES

1. Changes on Bearing box and Bearing retainer

(TI#A1058)

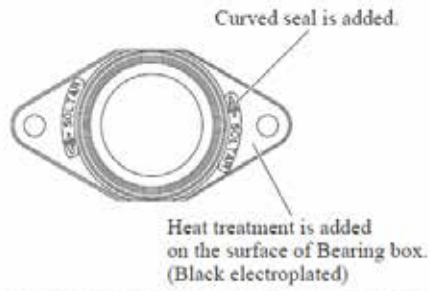
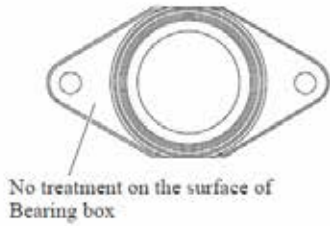
Item No.	Description	Type 1	Type 2
35	Bearing box	318346-3	319044-2
39	Bearing retainer 19-33	285834-4	285858-0

Above parts are completely interchangeable as a set.

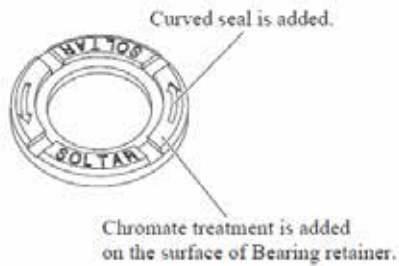
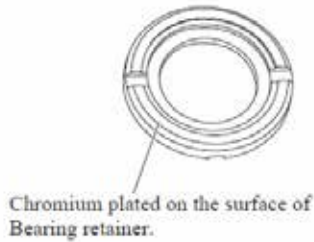
Type 1

Type 2

① Bearing box



② ③ Bearing retainer 19-33



2. Addition of Sponge

(TI#A2622)

Item No.	Description	Type 1
100	Sponge	455133-0

